


## CATERPILLAR CP12GC ROLLER

### Major Service

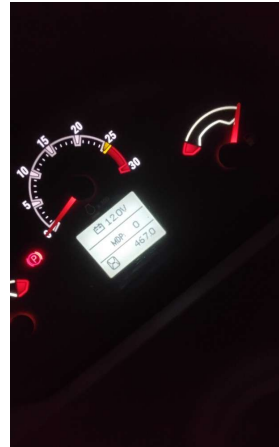
● 0 ● 15 ● 83 ● 10

Inspection Number	RP057900	Customer No	200000
Serial Number	M3K00181	Customer Name	AUSTRALIAN HAMMER SUPPLIES HIRE
Make	CATERPILLAR	Customer Email	
Model	CP12 GC (PAD)	Works Order	RP057900
Equipment Family	ROLLER	Completed On	26/05/2026 9:29:33 AM
Asset ID	AHSH211	Inspector	Etienne Llanos
Location	AUSTRALIAN HAMMER SUPPLIES HIRE Unit 3/32 WILLIAMSON RD  INGLEBURN 2565	PDF Generated On	26/05/2026
		Machine Hours	467
Customer		Next Meter	750

### General Info & Comments

● General Info/Comments

first 500hr



## TASK SAFETY INSTRUCTIONS

- |  |      |
|--|------|
| ● 1.1 Wear Correct PPE at all times  | PASS |
| ● 1.2 All isolation and safe work procedures must be followed                      | PASS |
| ● 1.3 Identify task hazards and controls utilising hierarchy or controls model     | PASS |
| ● 1.4 Ensure a competent operator and spotter is utilised to move mobile equipment | PASS |
| ● 1.5 Ensure all mobile equipment is fundamentally stable                          | PASS |
| ● 1.6 Ensure three points of contact is maintained during access and egress        | PASS |
| ● 1.7 Ensure acceptable housekeeping standards are maintained at all times         | PASS |

## MACHINE GENERAL RUNNINGCHECKS

●	2.1 Check all work lights, beacon & reverse alarm for operation	PASS
●	2.2 Test all dash warning lights, gauges and audible alarms for correct operation	PASS
●	2.3 Check idle timer for correct shut down operation	PASS
●	2.4 Check operation of all three emergency stop buttons	PASS
●	2.5 Check operation of horn	PASS
●	2.6 Check operation of reverse camera	PASS
●	2.7 Check alternator charge voltage	PASS
●	2.8 Check operation of auto grease system by manually activating timer	N/A
●	2.9 Check fire system control panel for 'Normal'	N/A

#### PM FIRE SUPPRESSION SYSTEM

●	5.1 Ensure fire suppression bottle and components are securely mounted and in good condition	N/A
●	5.2 Ensure fire suppression is correctly charged	N/A
●	5.3 Inspect last charge date	DATE:2026-05-26 T00:00:00.000000 0
●	5.4 Check all fire extinguishers are securely mounted and in good condition	PASS
●	5.5 Check all fire extinguishers are correctly charged	PASS
●	5.6 Inspect last charge date	DATE:2026-05-26 T00:00:00.000000 0

#### PM ENGINE

●	6.1 Perform engine valve set	N/A
●	6.2 Inspect air intake system hoses, pipes, clamps for signs of dirt ingress	PASS
●	6.3 Inspect engine for oil or fuel leaks	PASS
●	6.4 Inspect engine components for missing clamps	PASS

- |  |      |
|--|------|
| ● 6.5 Inspect exhaust system for signs of leaks, loose bolts or missing clamps | PASS |
| ● 6.6 Inspect turbo for security and signs of leaks                            | PASS |
| ● 6.7 Inspect condition of exhaust lagging                                     | PASS |
| ● 6.8 Inspect engine mounts for condition and loose hardware                   | PASS |
| ● 6.9 Inspect alternator mount condition and adjustment                        | PASS |
| ● 6.10 Inspect wiring condition and security                                   | PASS |
| ● 6.11 Inspect engine belts  | PASS |

## PM ENGINE COOLING SYSTEM

- |  |      |
|--|------|
| ● 7.1 Check coolant level                      | PASS |
| ● 7.2 Check condition of radiator cap          | PASS |
| ● 7.3 Check condition of radiator core         | PASS |
| ● 7.4 Check cooling system for signs of leaks  | PASS |
| ● 7.5 Check hose and clamp condition           | PASS |
| ● 7.6 Inspect fan condition and operation      | PASS |
| ● 7.7 Inspect radiator and fan guard condition | PASS |

## PM SWING TRANSMISSION

- |   |      |
|---|------|
| ● 8.1 Inspect swing transmission for signs of leaks | PASS |
| ● 8.2 Inspect swing transmission oil level          | PASS |

## PM HYDRAULIC SYSTEM

- |   |      |
|---|------|
| ● 9.1 Check hydraulic oil level                           | PASS |
| ● 9.2 Inspect hydraulic cylinders for leaks and security  | PASS |
| ● 9.3 Inspect hydraulic hoses for leaks, damage, security | PASS |
| ● 9.4 Inspect hydraulic pump condition, leaks, security   | PASS |

- 9.5 Check Pilot Accumulator operation as per OEM Maintenance Procedure - Test Boom Down Functionality with engine off *PASS*

## PM FINAL DRIVES

- 10.1 Inspect LHS final drive mount condition for leaks and security *PASS*
- 10.2 Inspect LHS oil level and mag plug condition *PASS*
- 10.3 Inspect RHS final drive mount condition for leaks and security *PASS*
- 10.4 Inspect RHS oil level and mag plug condition *PASS*

## PM UNDERCARRIAGE

- 11.1 Inspect LHS track tension *PASS*
- 11.2 Inspect RHS track tension *PASS*
- 11.3 Inspect tracks for loose/missing bolts *PASS*
- 11.4 Inspect load and carrier rollers for signs of leaks *PASS*
- 11.5 Inspect idlers for signs of leaks *PASS*
- 11.6 Inspect sprocket segments condition *PASS*
- 11.7 Inspect track frame for cracks, lose or missing hardware *PASS*

## PM FRAME AND BODY

- 12.1 Check panels for damage and security *PASS*
- 12.2 Check access steps and walkway condition *PASS*
- 12.3 Inspect boom condition – cracks, missing clamps, damaged pipes, excessive movement, lubrication *PASS*
- 12.4 Inspect stick condition – cracks, missing clamps, damaged pipes, excessive movement, lubrication *PASS*
- 12.5 Inspect quick hitch condition and operation *PASS*
- 12.6 Inspect bucket condition – cracks, wear, damage, mounts *PASS*
- 12.7 Inspect GET condition and hardware *PASS*

#### PM ELECTRICAL SYSTEM

<input checked="" type="radio"/>	13.1 Check battery condition	PASS
<input checked="" type="radio"/>	13.2 Check battery terminal condition	PASS
<input checked="" type="radio"/>	13.3 Check battery security	PASS
<input checked="" type="radio"/>	13.4 Check battery box drain is clear	PASS
<input checked="" type="radio"/>	13.5 Check wiring condition and security	PASS

#### PM GREASE SYSTEM

<input checked="" type="radio"/>	14.1 Check all points for acceptable lubrication	PASS
<input type="radio"/>	14.2 Inspect grease system operation	N/A
<input checked="" type="radio"/>	14.3 Check grease line condition	PASS
<input type="radio"/>	14.4 Refill grease tank	N/A
<input type="radio"/>	14.5 Lubricate bucket linkage	N/A
<input type="radio"/>	14.6 Lubricate blade linkage	N/A
<input checked="" type="radio"/>	14.7 Lubricate boom & stick linkage	PASS
<input checked="" type="radio"/>	14.8 Lubricate swing bearing	PASS

#### PM OPERATOR STATION

<input checked="" type="radio"/>	15.1 Check all doors for correct opening and closing adjustments and operation	PASS
<input checked="" type="radio"/>	15.2 Inspect condition of door seals	PASS
<input checked="" type="radio"/>	15.3 Check window glass and seal condition	PASS
<input checked="" type="radio"/>	15.4 Check mirror condition and adjustments	PASS
<input checked="" type="radio"/>	15.5 Fill window washer reservoir	PASS
<input checked="" type="radio"/>	15.6 Inspect air con vents condition	PASS
<input checked="" type="radio"/>	15.7 Inspect seat belt and mounting hardware	PASS

● 15.8 Inspect seat condition, operation and mounting PASS

● 15.9 Replace cabin A/C filter PASS

#### OIL SAMPLING

● 16.1 Engine PASS

#### PM POST SERVICE INSPECTION CHECKS

● 17.1 All inspections have been completed and rectified as required PASS

● 17.2 All safety related defects have been repaired or reported PASS

● 17.3 All defects have been noted and reported PASS

● 17.4 All fluids are at correct level and drain plugs tight PASS

● 17.5 All oil samples have visually been inspected and any notable signs of contamination have been reported PASS

● 17.6 All replaced filters have been cut and inspected and photos added to CAT Inspect and reported to supervisor N/A

● 17.7 Machine has been recommissioned and ready for operation PASS

● 17.8 PM service notification marked off in Vision Link MONITOR

#### DEFECTS IDENTIFIED

● 18.1 DEFECTS IDENTIFIED none

#### OIL USED

● 19.1 Hydraulic oil 0

● 19.2 Engine oil 11

● 19.3 Slew oil 0

● 19.4 Gear oil 0

● 19.5 Coolant 0